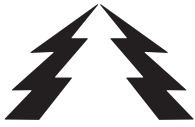


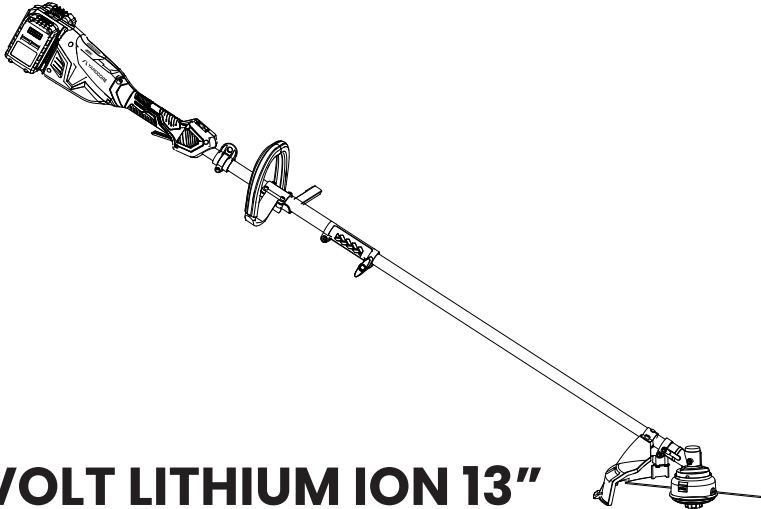
THANK YOU FOR CHOOSING YARDCORE



**YARDCORE®**  
**TOOLS BUILT FOR NATURE**

# INSTRUCTION MANUAL

## CORDLESS BRUSH CUTTER



**40 VOLT LITHIUM ION 13"**

**TOOL MODEL NUMBER YC-BC4013**



Access product manuals instantly!

THIS TOOL IS AVAILABLE IN TWO BOX OPTIONS

YC-BC4013-2B	Includes: Brush Cutter Tool (YC-BC4013), 2 x 20V Batteries (YC-MSB-204), 1 x Dual Slot Charger (YC-DSC-12020)
YC-BC4013-NB	Brush Cutter Tool (YC-BC4013) ONLY Battery and charger sold separately

This is a manual for both the model numbers

<b>SYMBOLS &amp; SAFETY ICONS</b>	<b>01</b>
<b>PRODUCT SAFETY</b>	<b>02</b>
<b>KNOW YOUR TOOL</b>	<b>03</b>
<b>ASSEMBLY &amp; SETUP</b>	<b>04</b>
<b>OPERATION</b>	<b>05</b>
<b>LINE &amp; BLADE MAINTENANCE</b>	<b>06</b>
<b>MAINTENANCE SCHEDULE</b>	<b>08</b>
<b>TECHNICAL SPECIFICATION</b>	<b>09</b>
<b>BATTERY LEVEL INDICATOR</b>	<b>09</b>
<b>CHARGING TIME</b>	<b>09</b>
<b>MULTI SHARE BATTERY COMPATIBILITY</b>	<b>09</b>
<b>CHARGER STATUS INDICATOR</b>	<b>09</b>
<b>STORAGE</b>	<b>10</b>
<b>TROUBLESHOOTING</b>	<b>11</b>
<b>ENVIRONMENTAL NOTE</b>	<b>11</b>
<b>WARRANTY INFORMATION</b>	<b>12</b>
<b>CONTACT INFORMATION</b>	<b>12</b>
<b>THANK YOU</b>	<b>13</b>

# SYMBOLS & SAFETY ICONS

Refer to this page for all safety labels and warnings used throughout the manual and on product labels.



### General Warning

Indicates a potential hazard. Follow all safety instructions before use.



### Read Operator's Manual

Read the manual thoroughly before operating the equipment.



### Wear Safety Helmet

Always wear a protective helmet to avoid head injuries.



### Wear Safety Footwear

Use safety boots to protect feet from debris and sharp objects.



### Wear Hearing Protection

Always wear ear protection to prevent hearing damage from loud noise.



### Wear Protective Clothing

Wear snug-fitting, full-body clothing to reduce injury risk.



### Wear Protective Gloves

Protect hands from cuts, abrasions, and contact with sharp tools.



### Wear Safety Glasses

Shield eyes from flying debris and dust.



### Do Not Use in Rain or Wet Conditions

Not intended for use in wet conditions.



### Keep Hair Tied

Secure long hair to prevent it from being caught in moving parts.



### Keep Hands Away

Keep hands away from the blade and moving parts to avoid injury.



### Thrown Object Hazard

Beware of flying debris. Ensure others are at a safe distance.



### Rotating Blade Warning

Avoid contact with blades. Risk of serious injury.



### Keep Safe Distance

Maintain a safe distance from the operating machine.



### Keep Bystanders Away (15m / 50ft)

Children, pets, and bystanders must stay at least 15 meters (50 feet) away.



### Noise Level Rating

The machine emits 96 decibels of sound — wear hearing protection.



### Do Not Dispose in Household Waste

Dispose in accordance with local electronic/e-waste regulations.



### Recyclable Material

This product or packaging is recyclable. Dispose of it according to local recycling regulations.



### Battery Inside

This label indicates the package contains a lithium battery.



### Only Tool Inside

This label indicates the package includes the tool only. Battery and charger are not included and sold separately.



### Remove Battery Before Servicing

Always remove the battery before cleaning, transporting, or changing accessories.



### Do Not Burn

Do not burn the product or its parts. Risk of fire or explosion.

call2recycle

### Recycle Yardcore Batteries

Do not discard batteries in the trash. When they reach end of life, recycle through Call2Recycle® at 1-800-822-8837 or visit [call2recycle.org](http://call2recycle.org).



### Yardcore Sustainability

One tree planted for every tool, plus support for broader eco-friendly initiatives.

**⚠️ WARNING: Proposition 65 (California Only)**  
 This product can expose you to chemicals including lead and Di(2-ethylhexyl) phthalate (DEHP), which are known to the State of California to cause cancer and birth defects or other reproductive harm.  
 For more information, visit [www.P65Warnings.ca.gov](http://www.P65Warnings.ca.gov).

### IMPORTANT SAFETY INSTRUCTIONS

**⚠️ WARNING:**  
 Read all safety warnings and instructions before use. Failure to follow warnings and instructions may result in electric shock, fire, or serious injury.

**⚠️ WARNING: READ ALL INSTRUCTIONS**

### FOR ALL YARDCORE TOOLS

1. Avoid Dangerous Environments – Do not use the tool in damp or wet locations.
2. Do Not Use in Rain – This unit is not weatherproof.
3. Keep Children and Bystanders Away – Maintain a safe distance from the work area.
4. Dress Properly – Avoid loose clothing or jewelry that can become entangled in moving parts. Wear protective gloves, sturdy footwear, and secure your long hair.
5. Wear Eye and Face Protection – Use safety glasses or a face shield. Wear a dust mask if operating in dusty conditions.
6. Use Tool as Intended – Operate the brush cutter only for tasks it was designed for. Misuse may cause injury or damage.
7. Do Not Force the Tool – Operate at the designed speed for optimal performance and safety.
8. Maintain Proper Balance – Do not overreach. Keep firm footing and balance at all times.
9. Stay Alert – Operate the tool with full awareness. Do not use it when tired or under the influence of substances.
10. Store Safely – When not in use, store the tool indoors in a dry, secure location away from children.
11. Maintain the Tool with Care – Keep the cutting head sharp and clean. Follow maintenance instructions for lubricating and replacing accessories.
12. Inspect Before Use – Always check for damaged guards, misalignment, or broken parts. If damaged, have the unit serviced by an authorized Yardcore service center.

### FOR BATTERY-POWERED YARDCORE EQUIPMENT

1. Prevent Accidental Starting – Ensure the power switch is OFF before connecting the battery or moving the unit.
2. Disconnect Battery Before Maintenance – Remove the battery before changing accessories, cleaning, or storage.
3. Use the Correct Charger – Charge only with Yardcore approved chargers. Using the wrong charger can pose a fire risk.
4. Use Only Approved Batteries – Only use Yardcore 20V battery packs. Other batteries may cause injury or damage.
5. Avoid Short Circuits – Keep battery terminals away from metal objects such as keys, nails, or coins. Shorting may cause burns or a fire.
6. Handle Leaks Carefully – If battery fluid leaks, avoid contact. Rinse with water if exposed. Seek medical help if fluid contacts the eyes.
7. Do Not Use Damaged Batteries – Replace any battery that is cracked, punctured, or showing signs of damage.
8. Keep Away from Heat & Flames – Do not expose the battery to fire or temperatures above 130°C (265°F).
9. Charge Within Safe Temperatures – Only charge the battery within the temperature range listed in the manual to prevent overheating or damage.
10. Service by Professionals Only – Repairs should be performed by qualified technicians using Yardcore approved parts.
11. Do Not Modify – Do not open, alter, or repair the battery pack unless instructed in this manual.
12. Charge in a Safe Area – Do not charge the battery near flammable materials or on combustible surfaces.

### ADDITIONAL SAFETY PRECAUTIONS FOR BRUSH CUTTERS

1. Keep All Guards in Place – Never operate the cutter without the protective guards.
2. Keep Hands and Feet Away – Stay clear of the cutting blade during operation.
3. Use Only Recommended Trimmer Line – Do not install metal wire, rope, or unapproved cutting line.
4. Never Use Heavier Lines Than Specified – Refer to this manual for approved line sizes.

### BATTERY PACK SAFETY WARNINGS

1. Do Not Dismantle, Crush, or Shred the Battery – Doing so may result in fire, explosion, or chemical exposure.
2. Do Not Expose to Fire, Heat, or Direct Sunlight – Exposure to temperatures above 130°C (265°F) may cause the battery to explode.
3. Avoid Short-Circuiting the Terminals – Keep the battery away from metal objects such as keys, nails, or coins. Shorting may cause burns or a fire.
4. Store Batteries in Original Packaging Until Use – This helps prevent accidental damage or short-circuiting.
5. Avoid Mechanical Shock – Do not drop or strike the battery. Physical damage may lead to dangerous failure.
6. If Battery Fluid Leaks – Avoid contact with skin or eyes. In case of contact, rinse immediately with clean water and seek medical attention.

### CHARGING SAFETY TIPS

1. Always charge the battery on a non-flammable, flat surface in a well-ventilated area.
2. Do not cover the charger or battery during charging.
3. Do not leave the battery unattended while charging.
4. Unplug the charger from the outlet when not in use.
5. If the battery becomes excessively hot, disconnect it immediately and allow it to cool.

### FIRE AND EXPLOSION HAZARDS

1. Keep the tool and battery away from flames, sparks, and flammable surfaces.
2. Do not incinerate the battery pack, even if it is severely damaged or completely worn out.
3. If the battery emits smoke, an unusual odor, or excessive heat, stop using the product immediately and contact Yardcore Support.

### STORAGE AND TRANSPORTATION

1. Store the tool and battery in a cool, dry place away from direct sunlight, heat sources, or moisture.
2. Do not transport the battery where the terminals may contact metal objects. Use original packaging or a protective cover to prevent short circuits.
3. Remove the battery from the tool when not in use or during long-term storage.

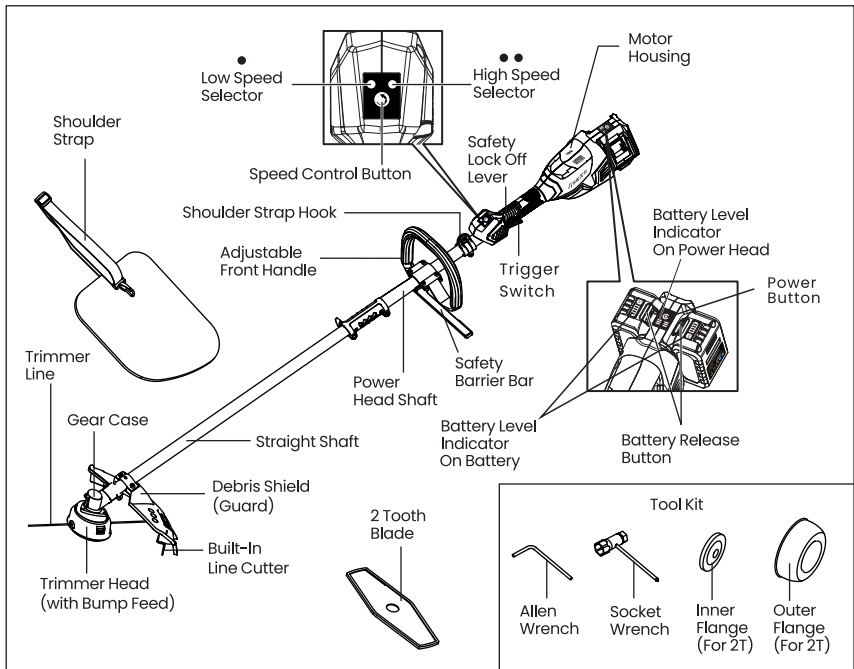
### EMERGENCY RESPONSE INSTRUCTIONS

1. In case of fire, use a Class D fire extinguisher (recommended for lithium-ion batteries).
2. Do not use water to extinguish battery fires.
3. If battery fluid contacts skin or eyes, rinse immediately with clean water and seek medical attention.
4. If you feel dizzy, nauseous, or experience irritation after exposure to battery fumes, move to fresh air and contact a healthcare provider.

### ENVIRONMENTAL SAFETY

1. Dispose of this product, battery, and packaging in accordance with local regulations.
2. Do not dispose of batteries in household waste or throw them in the trash. When they reach the end of life, recycle through Call2Recycle® at 1-800-822-8837 or visit [call2recycle.org](http://call2recycle.org).
3. Help reduce environmental impact by recycling whenever possible.
4. Yardcore is committed to sustainability. Please recycle responsibly.

**PART LIST & FUNCTION**



**LOW SPEED SELECTOR ●**  
Reduces power and speed for light-duty trimming or battery-saving operation. Press power button once.

**HIGH SPEED SELECTOR ●●**  
Increases power and speed for thick grass and tough weeds. Press power button twice.

**SPEED CONTROL BUTTON**  
Switches between high and low gear speed for different trimming conditions.

**TRIGGER SWITCH / SAFETY LOCK OFF LEVER**  
Starts and stops the tool. **The safety lock-off lever must be pushed before squeezing the trigger.**

**MOTOR HOUSING**  
Protective casing that contains the motor and internal electronics.

**BATTERY LEVEL INDICATOR**  
LED display that shows the current charge level of the battery. One on power head and the other on batteries.

**BATTERY RELEASE BUTTON**  
Press to remove the battery from the tool for charging or storage.

**SHOULDER STRAP**  
Worn over the shoulder to support the tool's weight and reduce fatigue during extended use.

**ADJUSTABLE FRONT HANDLE**  
Provides better control and balance while trimming. Easily repositioned for better comfort and control.

**TOOL KIT**  
Includes an Allen wrench, Socket wrench, Used for assembling and maintaining the front handle, blade, and trimmer head. Also has 2 flanges (for 2T Blade).

**SAFETY BARRIER BAR**  
Protective shield that keeps a safe distance between the user and the cutting blade or line.

**DEBRIS SHIELD (GUARD)**  
Helps block grass, stones, and debris from flying back toward the operator during use.

**BUILT-IN LINE CUTTER**  
Built-in blade that trims excess line to the correct cutting length automatically.

**TRIMMER LINE (INSIDE TRIMMER HEAD)**  
Comes with pre-loaded 14 feet of .080" Nylon twisted cutting line used to trim grass and weeds.

**TRIMMER HEAD WITH BUMP FEED**  
Holds and releases pre-loaded .080" twisted trimmer line when tapped on the ground, no need to stop or open the head.

**INSIDE THE BOX**

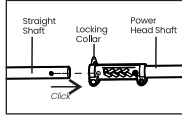
Accessories included vary by model—use the chart below to confirm what's in your box.

PARTS ↓	MODEL →	YC-BC4013-2B	YC-BC4013-NB
<b>20 V BATTERIES YC-MSB-204</b>		<b>2</b>	<b>NA</b>
<b>POWER HEAD SHAFT</b>		<b>1</b>	<b>1</b>
<b>STRAIGHT SHAFT</b>		<b>1</b>	<b>1</b>
<b>TRIMMER HEAD WITH BUMP FEED</b>		<b>1</b>	<b>1</b>
<b>2 TOOTH BLADE</b>		<b>1</b>	<b>1</b>
<b>ADJUSTABLE FRONT HANDLE</b>		<b>1</b>	<b>1</b>
<b>SHOULDER STRAP</b>		<b>1</b>	<b>1</b>
<b>DEBRIS SHIELD (GUARD)</b>		<b>1</b>	<b>1</b>
<b>TOOL KIT</b>		<b>1</b>	<b>1</b>
<b>DUAL CHARGER YC-DSC-12020</b>		<b>1</b>	<b>NA</b>

Only use the appropriate accessories intended for this tool. Accessory information can be found on the product packaging, or at our website [www.yardcoretools.com](http://www.yardcoretools.com)

## CONNECTING THE SHAFTS

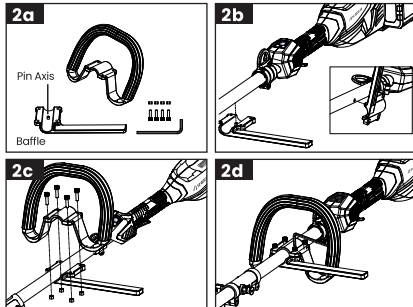
1. Take the power head shaft and the straight shaft.
  2. Align the hole on the straight shaft with the locking button on the power head shaft hole.
  3. Gently push the shafts together until you hear a click, indicating they are securely connected.
  4. Once connected, tighten the locking collar securely to ensure the shafts are firmly locked in place.
- ⚠ WARNING:** Do not operate the tool unless the shafts are fully connected and the locking collar is tightened. Loose connections can cause damage or injury.



## MOUNTING THE ADJUSTABLE FRONT HANDLE



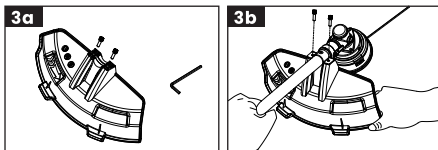
- ⚠ WARNING:** Always remove the battery pack from the product when you are assembling parts, making adjustments, cleaning, or when the product is not in use.
- ⚠ WARNING:** When the machine is used, the safety barrier must be installed onto the front handle.
- ⚠ WARNING:** Never use the machine without the front handle securely attached.
1. Stop the motor and remove the battery pack, if installed.
  2. Unscrew 4 screws, remove the Adjustable Front Handle and baffle (curved mounting plate) (Fig. 2a).
  3. Align the pin axis on the baffle (curved mounting plate) with the hole on the rod and install it in place (Fig. 2b).
  4. Install the Front handle onto the baffle (curved mounting plate), aligning the 4 holes (Fig. 2c).
  5. Use the Allen wrench to tighten the screw. (Fig. 2d).



## MOUNTING THE DEBRIS SHIELD (GUARD)

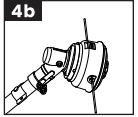
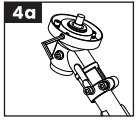


- ⚠ WARNING:** To reduce the risk of injury to people, do not operate without guard in place.
- ⚠ WARNING:** Always wear protective gloves when mounting or replacing the guard. The line-cutting blade on the guard is sharp — handle with care to avoid injury.
1. Loosen the two bolts on the guard using the supplied Allen wrench, then remove the bolts (Fig. 3a).
  2. Lift the trimmer head and face it downward. Align the two mounting holes in the guard with the two assembly holes in the base of the shaft. Ensure that the internal surface of the guard faces towards the trimmer head (Fig. 3b).
  3. Secure the guard to the shaft using the two bolts (Fig. 3b).
  4. Use the supplied Allen wrench to tighten the bolts. (Fig. 3b).
  5. Remove the 2 protective tapes from the Built In line cutter.



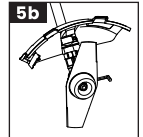
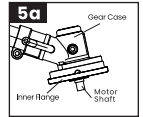
## TRIMMER HEAD INSTALLATION

1. Remove the nut and keep with the 2T blade, the nut is not required for the trimmer head installation.
2. Before installing the new trimmer head, ensure the inner flange is correctly positioned on the motor shaft (Fig. 4a).
3. Rotate the trimmer head to align the slot in the flange with the shaft-locking hole in the gear case.
4. Insert the provided Allen wrench into the aligned holes to act as a stabilizer.
5. Wear gloves. Securely tighten the trimmer head onto the shaft **counterclockwise** (Fig. 4b).



## OR 2 TOOTH BLADE (2T) INSTALLATION

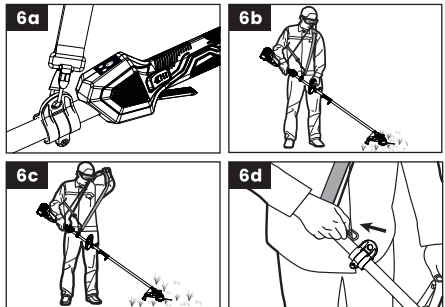
1. Remove the nut from the shaft.
2. Before installing the 2T Blade, ensure the inner flange is correctly positioned on the motor shaft (Fig. 5a).
3. Place the Allen wrench into the slot in the flange with the shaft-locking hole in the gearcase.
4. Insert the provided Allen wrench into the aligned holes to act as a stabilizer.
5. Take the 2T blade and align the hole with the drive shaft.
6. Put the 2 flanges on the drive shaft over the 2T Blade.
7. Put the nut and tighten it fully using the socket wrench. Wear gloves. Securely tighten the trimmer head onto the shaft counterclockwise (Fig. 5b).



## MOUNTING THE SHOULDER STRAP

1. Attach the Strap: Press the carabiner to open it, then hook it onto the shoulder strap hook on the tool (Fig. 6a).
2. Wear the Strap Properly: For safe and comfortable operation, place the shoulder strap over one shoulder as shown in Fig. 6b. Adjust the strap length to achieve a balanced and ergonomic working position.
3. Proper Handling: Hold the machine with both hands — one hand on the rear handle and the other on the front handle. Keep the trimmer head parallel to the ground so it contacts the material without requiring the operator to bend over.
4. Removing the Strap: There are two ways to release the strap:
  - Remove it directly from your shoulder (Fig. 6c), or
  - Press the carabiner and unhook it from the shoulder-strap loop (Fig. 6d).
5. Emergency Use Note: In case of an emergency, remove the strap from your shoulder immediately, regardless of how it's worn.

**NOTICE:** A properly adjusted strap can reduce arm fatigue during extended use.



## ASSEMBLY & SETUP

### ⚠ WARNING:

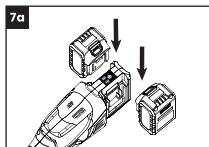
#### ATTACHING/DETACHING MULTI SHARE BATTERY

**Do not attach battery until assembly is complete.**

**NOTICE: Fully charge the battery pack before first use.**

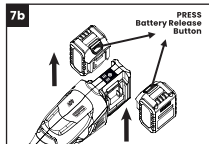
#### To Attach

Align the battery ribs with the mounting slots in the machine's battery port and slide the battery pack until it snaps into position (Fig. 7a).



#### To Detach

- Press the battery release button, and the battery pack will disengage from the latch (Fig. 7b).
- Grasp the battery pack and remove it from the machine.



⚠ **WARNING:** Always be aware of the location of your feet, children, or pets when pressing the battery release button. Serious injury could result if the battery pack falls. NEVER remove the battery pack from a high location.

### BUYING A MULTI SHARE BATTERY OR CHARGER

If your product did not include a battery or charger (e.g., YC-BC4013-NB box), you will need:

- Battery Model: Yardcore YC-MSB-204 (20V 4.0Ah)
- Charger Model: Yardcore YC-DSC-12020 (Dual Slot)  
Yardcore YC-SSC-12020 (Single Slot)

All usage, charging, and safety instructions are included in this manual.

Replacement batteries and chargers are available at [yardcoretools.com](http://yardcoretools.com) or authorized retailers.

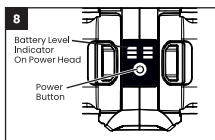
## OPERATION

### TURNING ON/OFF THE MACHINE (FIG. 8)

- Press the power button once to switch on the machine.
- The indicator light will illuminate when the tool is ready for operation.

#### TO TURN OFF:

- Press and hold the power button for 3 seconds to turn off manually.



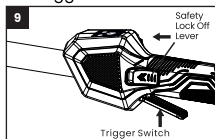
#### AUTO POWER-OFF:

- If the machine is idle for 1 minute, it will automatically power off to save energy.

### TO START THE MACHINE (FIG. 9)

- Push the safety lock-off lever forward.
- While holding the lever forward, press the trigger switch to start the motor.
- Once the motor is running, you may release the safety lock while continuing to hold the trigger.

**NOTICE: The motor starts only when the safety lock-off lever is moved forward and the trigger switch is pressed at the same time.**



#### TO STOP THE MACHINE



Move the machine away from the cutting area and release the trigger switch to stop it.

⚠ **WARNING:** Always remove the battery pack from the machine during work breaks and after finishing work.

### CHANGING SPEED MODE (FIG. 10)

This machine features two speed modes, which can be toggled using the speed control button.

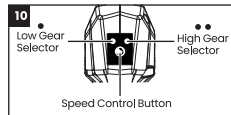
- Press the speed control button to cycle between speed modes.
- The speed indicator lights will show the current mode:
  - One light = Low speed
  - Two lights = High speed

Low Speed Mode provides better control and longer operating time per charge.

High Speed Mode delivers more cutting power for tougher tasks.

**NOTICE:** Speed can only be changed when the trigger switch is released.

The machine will retain your last selected speed mode when restarted.

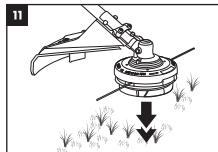


### ADJUSTING THE CUTTING LINE LENGTH

This trimmer features a **bump-feed** mechanism that allows you to extend the cutting line without stopping the motor. As the line becomes frayed or worn, you can release more line by gently tapping the trimmer head on the ground while the motor is running. (Fig. 11).

#### ⚠ WARNING:

Do not remove or alter the line-cutting blade assembly. Excessive line length will cause the motor to overheat and may result in serious personal injury. For best results, tap the trimmer head on bare ground or hard soil.



If line release is attempted in tall grass, the motor may overheat. Always keep the trimming line fully extended. Line release becomes more difficult as the cutting line becomes shorter. Replace the line when necessary. For instructions, please see section "LINE REPLACEMENT".

## LINE REPLACEMENT



**NOTICE:** Always use the recommended nylon cutting line with a diameter not exceeding 0.095" (2.4 mm). Using other line types may cause the machine to overheat or become damaged.

**⚠ WARNING:** Never use metal-reinforced line, wire, or rope, etc. These can break off and become dangerous projectiles.

Trimmer head assembly is shown for reference in Fig. 12a.

1. Remove the battery pack.
2. Cut one piece of 0.080 in (2.0 mm) line, 14 ft (4 m) long.
3. The arrow on the bump head must align with the outer cover arrow. (▶▶)
4. Insert the line into the eyelet (Fig. 11a) and push it through until it exits the opposite eyelet.
5. Pull the line from both sides until equal lengths are showing.
6. Press and rotate the bump feed head in the direction of the arrow to wind the line onto the spool, leaving about 5 in. (12 cm) on each side. (Fig. 11b)
7. If needed, push the bump feed head down while pulling the lines to manually to release the line and check proper assembly.



## RELOADING THE CUTTING LINE



**NOTICE:** If the cutting line breaks off inside the eyelet, or if line is not released when tapping, follow the steps below:

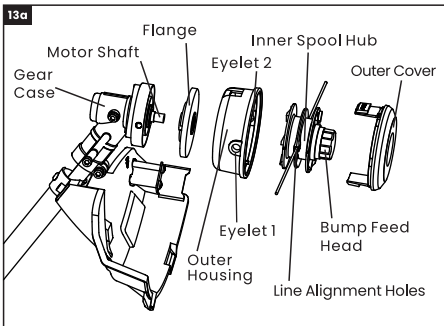
1. Remove the battery pack.
2. Press the two "PUSH" tabs on the trimmer head.
3. Pull the Outer housing straight out to remove it
4. Remove the cutting line from the spool hub.
5. Ensure the spring remains in its original position in the outer housing.
6. While holding the trimmer with one hand, use the other to align the slots in the outer housing with the "PUSH" tabs.
7. Press until it snaps into place, you will hear a distinct click.
8. Follow the steps in the "LINE REPLACEMENT" section to reload the line. Ensure the release tabs snap into place — if not, the spool may come loose during use, causing serious injury.



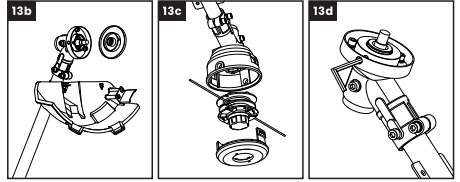
## REPLACE THE TRIMMER HEAD WITH THE 2 TOOTH BLADE

Familiarize yourself with the trimmer head by referring to Fig. 13a.

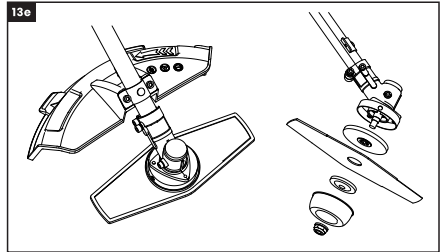
Follow the steps below to remove the trimmer head and mount the 2 tooth blade.



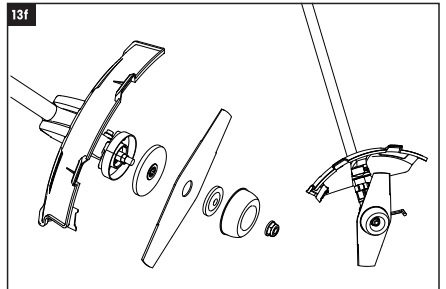
1. Disconnect the battery pack.
2. Rotate the trimmer head to align the slot in the inner flange with the shaft-locking hole in the gear case. Insert the provided Allen wrench into the aligned hole to stabilize the shaft (Fig. 13b).
3. Wear gloves. Rotate the trimmer head CLOCKWISE, following the rotation direction marked on the upper cover (Fig. 13c), until it can be removed from the shaft.
4. The 2-tooth blade is shipped in a sheath. Remove the blade from the sheath and store the sheath safely for future use.



1. Before mounting the blade, ensure the inner flange and flange cover are correctly positioned on the motor shaft (Fig. 13d).
2. Rotate the motor shaft to align the inner flange slot with the shaft-locking hole in the gear case.
3. Insert the Allen wrench into the aligned holes to stabilize the shaft.
4. Mount the blade onto the motor shaft, ensuring the blade surface is flush with the inner flange bulge. Place the outer flange and the nut (inside the Tool kit) (Fig. 13e).
5. Finger-tighten the nut COUNTERCLOCKWISE.
6. Position the gear case against a solid surface for support. Hold the shaft with one hand and use a 16mm socket wrench (not included) to fully tighten the nut COUNTERCLOCKWISE (Fig. 13f).



**⚠ WARNING:** To prevent injury, always wear gloves when handling the 2-tooth blade.



## USING THE MACHINE WITH 2 TOOTH BLADE

To cut wild growth and scrub, lower the rotating blade onto the vegetation to produce a chopping effect. Use the brush cutter like a scythe, sweeping it right and left at ground level. Do not use the cutting attachment above waist height.

**⚠ WARNING:** The higher the blade is off the ground, the greater the risk of injury from thrown debris.

**⚠ WARNING:** When cutting young stands or other woody materials up to 3/4 in (2 cm) in diameter, use the left side of the blade to avoid blade thrust situations. Do not attempt to cut woody material with a larger diameter, since the blade may catch or jerk the brush cutter forward. This may cause blade or tool damage, or result in loss of control and personal injury.

**⚠ WARNING:** Improper blade use may cause cracking, chipping, or shattering. Thrown parts can cause serious injury to the operator or bystanders. To reduce the risk of personal injury, it is essential to take the following precautions:

- Avoid contact with hard objects like stone, rock, or metal.
- Never cut stems or shrubs over 3/4 in (2 cm) in diameter.
- Inspect the blade regularly for signs of damage.
- Stop using damaged blades immediately.
- Re-sharpen the blade when noticeably dull.
- Have the blade balanced if needed (must be done by a qualified service technician).

## BLADE THRUST

**⚠ WARNING:** Exercise extreme caution when using the blade. Blade thrust is a sudden reaction that may occur when the spinning blade contacts an object it cannot cut. This contact may cause the blade to stop instantly and forcefully thrust the unit away from the object. This reaction can be violent enough to cause loss of control.

Blade thrust may happen without warning if the blade snags, stalls, or binds — especially in areas where material is difficult to see.

To reduce the risk of blade thrust:

- Cut from right to left for better control.
- This direction helps minimize risk if the blade strikes an unexpected object or woody stem.

## TIPS FOR BEST BRUSH CUTTING RESULTS

- Always hold the brush cutter on your right side with both hands.
- Maintain a firm grip on both handles.
- Keep your balance on both feet.
- Position yourself so you're not pulled off balance by kickback from the blade.
- Inspect and clear the area of hidden objects like glass, rocks, concrete, fencing, wire, wood, or metal — these may be thrown or entangled in the blade.
- Never use blades near sidewalks, fences, posts, buildings, or other immovable objects.
- Do not reuse a blade after striking a hard object without first inspecting for damage.
- If any damage is found, do not use the blade.
- Cut from right to left, using a broad, sweeping motion.
- Use only the Yardcore™ blade.
- Using other brands may cause serious personal injury. (Available at yardcoretools.com)

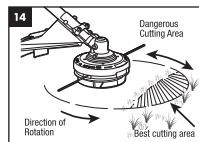
## SHARPEN THE BUILT-IN LINE-CUTTER BLADE

**⚠ WARNING:** Always protect your hands by wearing heavy gloves when performing any maintenance on the line-cutting blade.

1. Remove the line-cutting blade from the Debris Shield
2. Secure the blade in a vise.
3. Wear eye protection and gloves, and take care not to cut yourself.
4. Sharpen the cutting edges with a fine-tooth file or sharpening stone, maintaining the original edge angle.
5. Reinstall the blade onto the Debris Shield (guard) and secure it with the two screws.

## TIPS FOR BEST GRASS TRIMMING RESULTS (FIG. 14)

- The correct angle for the cutting attachment is parallel to the ground.
- Do not force the trimmer. Allow the tip of the line to do the cutting (especially along walls). Cutting with more than the tip reduces cutting efficiency and may overload the motor.
- The cutting height is based on the distance of the line from the lawn surface.
- Grass over 8 inches (20 cm) should be cut from top to bottom in small increments to reduce line wear or motor drag.

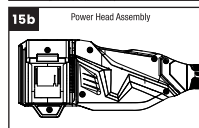
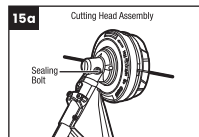


- Slowly move the trimmer into and out of the cutting area, keeping the cutting head at the desired height. Use a forward-backward or side-to-side motion. Cutting shorter lengths produces the best results.
- Avoid trimming wet grass and weeds.
- Wire and picket fences can cause extra cutting line wear or breakage. Stone and brick walls, curbs, and wood may wear cutting line rapidly.
- Avoid contact with trees and shrubs. The line can damage bark, siding, and fence posts.

## TRANSMISSION GEARS LUBRICATION

The transmission gears in both the cutting head and power head assemblies must be lubricated periodically using gear grease.

- Check the gear case grease level approximately every 50 hours of operation by removing the two sealing bolts (Fig. 15a, 15b).
- If no grease is visible on the gear flanks, follow the steps below to add gear grease up to 3/4 full.
- Do not completely fill the transmission gear case.



1. Use an Allen wrench to loosen and remove the sealing bolt(s).
2. Use a grease gun (not included) to inject some grease into the bolt hole; do not exceed 3/4 capacity.
3. Tighten the sealing bolt(s) after injection.

The grease should meet the following requirements:

- NLGI Grade Penetration: NLGI-1
- Thickener Type: Ester
- Recommended Operating Temperature Range: -40°F to 356°F (-40°C to 180°C)
- Other than above, the grease should also have excellent low-temperature startup, EP, mechanical shearing, abrasion resistance and oxidative stability.

COMPONENTS	WHAT TO CHECK	RECOMMENDED SCHEDULE	HELPFUL NOTES
Battery Pack	Cracks, swelling, leaks, overheating	Before each use	Stop using and contact Yardcore Support if anything seems off.
Battery Terminals	Dirt, corrosion, or bent contacts	Weekly or every 5 uses	Wipe gently with a dry cloth. No liquids or metal tools.
Battery Charge Level	Charge condition before and after use	Before & after each use	Avoid long-term storage at 0% or 100% charge.
Battery Storage	Kept in a cool, dry, battery-safe location	Ongoing	Store at ~50% charge if not using for more than a month.
Charger & Cable	Frayed cord, heat marks, bent plug	Monthly	Replace if damaged. Unplug when not in use.
Charging Ports	Dust or debris in charging slots	Monthly	Use a soft brush or cloth to clean.
Motor Housing & Vents	Grass, dust, or buildup blocking airflow	After each use	Wipe with a dry cloth. Keep vents clear.
Trigger & Handle Area	Sticky trigger, slow response	Weekly	Clean gently. If sticky, contact service.
Speed Selector	Both speed modes functioning normally	Weekly	Check while unloaded.
Trimming Line Feed	Auto/manual feed working as expected	Before each use	Replace or rewind line if jamming.
Trimmer Line Feed	Too short, tangled, or worn line	Monthly	Extend or replace line as needed.
Line Length	Too short, tangled, or worn line	Before each use	After each use
Spool Condition	Cracks, worn cleats, or misalignment	Every 2–3 uses	Replace with Yardcore-compatible spools.
Trimmer Head Assembly	Smooth rotation and rebound	Every 2–3 uses	Clear debris. Use silicone spray if needed (no oil-based lubricants).
Debris Shield (Guard)	Loose or cracked plastic	Weekly	Clean and replace if damaged.
Line Cutter Blade	Blade Dull or chipped	Monthly	Clean carefully. Replace if not cutting cleanly.
Main Shaft / Pole	Dents, bends, or loose joints	Monthly	Especially check if tool was dropped.
Screws & Bolts	Loose or missing fasteners	Monthly	Tighten gently. Do not overtighten.
Noise/Vibration	Excessive shaking or loudness	While operating	Could indicate spool imbalance or loose part.
Tool Storage Area	Dry, clean, temperature-controlled space	Ongoing	Avoid direct sunlight or extreme temperatures.
Plastic Surfaces	Dirt, sap, or stuck debris	After each use	Wipe with soft dry cloth. Avoid water or harsh cleaners.
Ventilation Slots	Clogged or dusty	Weekly	Clean with brush or vacuum.
General Inspection	Any signs of wear, damage, or missing parts	Monthly	Quick visual check can help catch issues early.

# TECHNICAL SPECIFICATIONS

	YC-BC4013-2B	YC-BC4013-NB
<b>RATED VOLTAGE</b>	40 V MAX (2x20V)**	
<b>RATED POWER</b>	1200 W	
<b>NO LOAD SPEED</b>	Low Speed: 5000 r/min High Speed: 6000 r/min	
<b>TRIMMER DIAMETER</b>	13" (350 mm)	
<b>2T BLADE DIAMETER</b>	10" (255 mm)	
<b>LINE DIAMETER</b>	0.080" (2.0 mm) line, Compatible with up to 0.095" (2.4 mm) line	
<b>LINE LENGTH</b>	4 m Twisted Line	
<b>CUTTING MECHANISM</b>	Bump Feed Head	
<b>BATTERY TYPE</b>	Lithium Ion	NA
<b>BATTERY MODEL</b>	YC-MSB-204 20V 4.0Ah	NA
<b>CHARGER MODEL</b>	YC-DSC-12020 (Dual Slot Charger)	NA
<b>DUAL CHARGER RATING</b>	Input: 120V~ 2.0A max Output: 2 x 40W	NA
<b>TOOL WEIGHT</b>	11.4 Lbs/ 5.2 Kgs	8.8 Lbs/ 4.0 Kgs
<b>TOOL DIMENSIONS LXXWH</b>	1840x315x215 mm FULLY ASSEMBLED 72.4x12.4x8.4" (With Debris Shield, Front Handle)	

\*\*Voltage measured without workload. Initial battery voltage reaches maximum of 20 volts. Nominal voltage is 18 volts.

## \*BATTERY LEVEL INDICATOR On Battery On Power Head

<b>LED ON BATTERY</b>				
<b>% OF CHARGE</b>	0 to 25	25 to 50	50 to 75	75 to 100
<b>TRIMMER RUN TIME</b>				
<b>NO LOAD LOW SPEED</b>	<4 mins	20	27	40
<b>LOAD HIGH SPEED</b>	<4 mins	15	20	28
<b>WITH LOW SPEED</b>	<3 mins	20	30	38
<b>LOAD HIGH SPEED</b>	<3 mins	10	20	26
<b>2T BLADE RUN TIME</b>				
<b>NO LOAD LOW SPEED</b>	<5 mins	45	50	72
<b>LOAD HIGH SPEED</b>	<5 mins	33	38	55
<b>WITH LOW SPEED</b>	<5 mins	21	40	55
<b>LOAD HIGH SPEED</b>	<5 mins	15	25	40
<b>BATTERY IMPLICATIONS</b>	Charge the battery		Best for long term storage	
<b>LED ON POWER HEAD</b>				
	— GREEN	— YELLOW	— YELLOW	— RED
	— RED	— RED	— RED	— RED

\*Times shown are estimates. Actual performance may vary with conditions and usage.

# CHARGING TIME

Charger Model	Battery Slots	Charging 1 Battery*	Charging 2 Batteries*
<b>YC-DSC-12020</b> <small>(Dual Slot Charger)</small>	2	120 mins	120 minutes <small>(charges both simultaneously)</small>
<b>YC-SSC-12020</b> <small>(Single Slot Charger)</small>	1	120 mins	NA

\*Charging times based on Yardcore MultiShare 20V 4.0Ah battery packs under standard conditions. Actual times may vary depending on battery age, temperature & usage.

## MULTI SHARE BATTERY COMPATIBILITY YC-MSB-204 20V 4 Ah Lithium

*TOOLS COMPATIBLE**		CHARGING		
<b>20V Series</b>	CORDLESS BRUSH CUTTER	YC-BC4013	SINGLE SLOT CHARGER	YC-SSC-12020
<b>2x20V 40V Max</b>	CORDLESS CHAINSAW	YC-CS4016	DUAL SLOT CHARGER	YC-DSC-12020
	CORDLESS LEAF BLOWER	YC-LB40120		

\*Yardcore is continuously expanding its battery platform. Please visit [www.yardcoretools.com](http://www.yardcoretools.com) for the most up-to-date compatibility list.  
\*\*Some tools include batteries and chargers, while others are sold separately. Always check product details before purchasing.

## CHARGER LED INDICATOR

GREEN LED*		RED LED		
	● Solid		● Solid	
Battery Is Charging	Without Battery	With Battery	Battery Error Detected	Charging Error**
Wait for battery to finish charging	No Battery Detected	100% Charge	Read Trouble shooting Page	Unplug charger & battery

\*YC-DSC-12020 has 2 Battery Slots with 2 LED lights each  
YC-SSC-12020 has 1 Battery Slot with 2 LED lights  
\*\* If charging takes unusually long time, the charger stops and shows a solid red light. Only use MultiShare Yardcore 20V 4 Ah Batteries

## STORAGE

### TOOL STORAGE

1. Always remove the battery pack from the tool after use.
2. The trimmer includes a hanging slot for wall-mounted storage.
3. Clean the tool thoroughly to remove grass and debris before storing.
4. Store indoors in a dry location where the tool is protected from moisture, direct sunlight, and mechanical damage.
5. Do not store the tool near heat sources or in areas with high humidity.

### BATTERY STORAGE

1. Remove the battery from the tool and store it separately.
2. Store the battery at approximately 50–75% charge (3 bars on the Battery Level Indicator on Battery).
3. Do not store the battery fully charged or completely discharged for extended periods.
4. Store in a cool, dry place away from direct sunlight, extreme temperatures, and flammable materials.
5. If storing for more than 3 months, check and recharge the battery every 3 to 6 months.

### CHARGER STORAGE

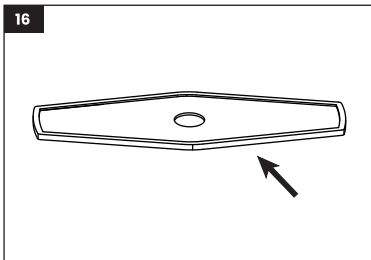
1. Unplug the charger from the wall outlet when not in use.
2. Store the charger in a clean, dry area away from moisture and dust.
3. Avoid storing the charger in temperatures below 0°C (32°F) or above 40°C (104°F).
4. Do not coil the power cord tightly during storage.

### TRIMMER HEAD STORAGE

1. Clean the trimmer head to remove accumulated grass, dirt, and moisture.
2. If detachable, store the head in a protective container or original packaging.
3. Store in a dry environment to prevent corrosion.
4. Inspect the spool and line before next use and replace if worn or brittle.

### 2 TOOTH BLADE STORAGE

1. If the 2-tooth blade is installed, always place its sheath over the blade before storing or transporting the machine.
2. Use caution around the sharp blade teeth (Fig. 16).



3. Clean the machine thoroughly before storage.
4. Store indoors, in a dry location that is inaccessible to children.
5. Keep the unit away from corrosive substances such as garden chemicals and deicing salts.

## TROUBLE SHOOTING

The table below lists common issues and simple actions you can try if your Yardcore brush cutter isn't working as expected. If these steps don't solve the problem, please contact Yardcore Customer Support or visit an authorized service center.

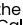
**⚠ WARNING:** Always switch off the tool and remove the battery before performing any checks or maintenance.

Problems	Possible Causes	Corrective Action
<b>Tool does not start</b>	Battery not inserted properly	Remove and reinstall the battery securely.
	Battery not charged	Fully recharge the battery.
	Battery contacts are dirty	Clean contacts with a dry cloth.
	Battery is too hot or too cold	Allow battery to return to room temperature.
	On/off switch not functioning	Contact Yardcore Service Center.
<b>Tool runs intermittently</b>	Battery connection is loose	Remove and reinstall battery.
	Internal wiring issue	Contact Yardcore Service Center.
<b>Excessive vibration or noise</b>	Line spool not seated properly	Remove and reinstall the spool.
	Debris in the cutting head	Remove debris after switching off and removing battery.
	Line tangled or unbalanced spool	Rewind or replace the spool.
<b>Bump Feed does not work</b>	Line not wound correctly	Rewind line evenly. See "RELOADING THE CUTTING LINE."
	Line is too short	Manually extend the line.
	Line is used up	Replace the spool with a new one.
	Grass or debris blocking the spool area	Clean the cutting head area carefully.
<b>Battery does not charge</b>	Charger not plugged in properly	Check connection and socket.
	Battery too hot or too cold	Allow battery to sit at room temperature.
	Battery or charger defective	Try an alternate battery or charger.
	Power source not working	Try a different outlet.
<b>Tool does not cut</b>	Line is too short or missing	Replace or extend line.
	Grass wrapped around the cutting head	Remove battery and clear the tangled grass.

Problems	Possible Causes	Corrective Action
<b>Battery charge indicator does not light</b>	Battery not seated on charger correctly	Remove and reinsert battery on the charger.
	Charger or battery damaged	Replace as needed. Contact Yardcore Support.
<b>Cutting time is too short</b>	Battery not fully charged	Charge battery fully.
	Heavy trimming load (thick grass/brush)	Cut in smaller sections or reduce speed.
	Battery is worn out	Replace with a new Yardcore battery.
<b>Poor cutting performance</b>	Line too short or broken	Extend or replace the line.
	Line is not feeding	Tap bump head or check for tangles.
	Line cutter blade is dull	Clean or replace the line cutter.
<b>Motor overheats or shuts off</b>	Tool used continuously under heavy load	Let the tool cool down before restarting.
	Blocked air vents	Clean the air vents.
<b>Line does not feed properly during use</b>	Spool is not wound evenly or tightly	Rewind the line evenly and tightly on the spool.
	Line is caught or tangled inside spool housing	Open the spool cap and untangle or reload the line.
	Bump feed mechanism is stuck due to debris buildup	Clean around the bump head and ensure it moves freely.
<b>Tool runs but cutting performance is weak or uneven</b>	Cutting line is too short or worn	Extend or replace the cutting line.
	Line cutter blade on guard is dull or missing	Inspect cutter and replace if worn or missing.
	Line spool is not seated flat or is loose	Remove and reinstall spool securely; check for proper alignment.

## ENVIRONMENTAL NOTE

Yardcore is committed to protecting the environment and reducing unnecessary waste. Please dispose of packaging, batteries, and worn-out tools responsibly.

1. Packaging Materials – Recycle cardboard, plastics, and inserts according to your local recycling guidelines.
2. Batteries – Do not discard batteries in the trash. When they reach end of life, recycle through Call2Recycle® at 1-800-822-8837 or visit call2recycle.org. 
3. Tool Disposal – When your tool reaches the end of its life, dispose of it at an official e-waste facility or recycling program.

For more information, visit [www.yardcoretools.com/recycle](http://www.yardcoretools.com/recycle)

## WARRANTY INFORMATION

Thank you for choosing Yardcore™. We're committed to delivering high-quality outdoor tools built to perform reliably – season after season – while giving back to the planet.

### LIMITED WARRANTY – 2+1 YEARS

Yardcore™ warrants that the tool, battery, and charger, if included with this product, are free from defects in materials and workmanship under normal residential use for a period of **2 years** from the original date of purchase.

When you register your product within **30 days**, Yardcore™ will extend your warranty by 1 additional year, for a total of **3 years** of limited coverage. If a covered defect arises during the warranty period, Yardcore™ will, at its sole discretion, provide one of the following remedies:

- A refund of the original purchase price
- Repair instructions or troubleshooting support
- A replacement, if feasible, through Amazon's platform
- Only one warranty claim is permitted per product.

### WHAT'S COVERED

This 2+1-year limited warranty applies to:

- Yardcore™ tools
- Yardcore™ lithium-ion batteries
- Yardcore™ battery chargers

### WHAT'S NOT COVERED

This warranty does not cover:

- Normal wear and tear (e.g., trimmer line, blades, cosmetic wear)
- Damage from misuse, abuse, or neglect
- Commercial or rental use
- Use of non-Yardcore™ accessories or parts
- Damage due to unauthorized repairs or modifications
- Failure to follow the operator's manual instructions

### HOW TO OBTAIN WARRANTY SERVICE

All Yardcore™ products are sold exclusively through authorized retailers.

If purchased on Amazon: Warranty service for Amazon orders is handled directly through Amazon's return and messaging system for fast support.

To request warranty assistance:

1. Stop using the product immediately.
2. Log in to your Amazon account and locate your Yardcore™ order.
3. Click "Contact Seller" or "Return/Replace Item."
4. Provide:
5. Your Amazon Order ID
6. A description of the issue
7. Photos or video (if applicable)

If purchased from [yardcoretools.com](http://yardcoretools.com) or another authorized dealer: Visit [www.yardcoretools.com/warranty](http://www.yardcoretools.com/warranty) for the latest warranty claim instructions and contact details.

**NOTICE:** Warranty support is only available for items purchased from authorized sellers.

### LIMITATION OF LIABILITY

To the extent permitted by law, Yardcore™ shall not be liable for incidental or consequential damages resulting from the use or inability to use this product. This Limited Warranty gives you specific legal rights, and you may also have other rights, which vary from state to state.

### NON-TRANSFERABLE WARRANTY

This warranty is valid only for the original purchaser and is non-transferable. Proof of purchase is required for all claims.

### PROOF OF PURCHASE REQUIRED

A valid proof of purchase, such as an original receipt, invoice, or Amazon order confirmation, is required for all warranty claims.

### PRODUCT REGISTRATION

Register your Yardcore™ product for:

- Faster warranty support
- Safety alerts & recall notices
- Exclusive offers and tool tips
- Early access to new products

To activate your full 3-year limited warranty, please register your product within **30 days** of purchase.

### REGISTER NOW

Scan the QR code or visit: [register.yardcoretools.com](http://register.yardcoretools.com)

Scan QR CODE for Product Registration and activate the +1 Year extended warranty



### YOUR PRIVACY

We'll use your email and phone number (if provided) only for:

- Warranty & product support
- Yardcore™ updates and promotions (with your consent)

**NOTICE:** Registration is optional but helps us serve you better – and is required to unlock your 3rd year of coverage.

### WARRANTY VOID CONDITIONS

Your Yardcore™ warranty will be considered void if:

- Used for commercial or rental purposes
- Modified or repaired by unauthorized persons
- Stored improperly or exposed to extreme conditions
- Used outside its intended purpose or design
- False or misleading information is provided in a warranty claim

### LEGAL DISCLAIMER

Yardcore™ reserves the right to update product specifications, features, designs, and packaging details at any time, without prior notice, to reflect ongoing improvements or regional requirements. For the latest product updates, manuals, and warranty terms, please visit: [www.yardcoretools.com](http://www.yardcoretools.com)

## CONTACT INFORMATION

Please contact us for any information or support needs.

### HEADQUARTERS

ZHEJIANG J SHINE IMP & EXP CO., LTD.  
Address: No. 27 Wujiang Avenue, Shentang Industrial Zone, Jinhua City, Zhejiang Province, China

### MANUFACTURING FACILITY & OFFICE

ZHEJIANG WELLSHINE INDUSTRY & TRADE CO., LTD.  
Shentang Industrial Zone, Baiyang Street, Wuyi, Jinhua, Zhejiang, China

### CONTACT INFO

EMAIL – SALES@YARDCORETOOLS.COM

EMAIL – SUPPORT@YARDCORETOOLS.COM

### SOCIAL MEDIA HANDLES

FACEBOOK – @YARDCORETOOLS  
LINKEDIN – @YARDCORETOOLS  
INSTAGRAM – @YARDCORETOOLS  
YOUTUBE – @YARDCORETOOLS

### WEBSITE

[WWW.YARDCORETOOLS.COM](http://WWW.YARDCORETOOLS.COM)  
[WWW.YARDCORE.US](http://WWW.YARDCORE.US)

### BUYING ON AMAZON

Search: "YardcoreTools" on Amazon

Yardcore reserves the right to update product information, specifications, and packaging details as needed based on ongoing improvements or regional requirements. For the latest product updates, support documents, and warranty terms, please visit our official website: [www.yardcoretools.com](http://www.yardcoretools.com)

## THANK YOU

---

### 1 TOOL = 1 TREE PLANTED

*For every Yardcore tool sold, we give back by planting a tree through our partnership with One Tree Planted. Learn more about our sustainability efforts at: [www.yardcoretools.com/sustainability](http://www.yardcoretools.com/sustainability)*

### YARDCORE MISSION

*To provide durable, eco-conscious gardening tools and expert knowledge, enabling families to grow with confidence, care for the environment, and create gardens where they can connect and flourish.*

### YARDCORE PURPOSE

*We are driven to create eco-conscious gardening tools that empower families to build gardens they can be proud of, fostering moments of connection while protecting the planet.*

### YARDCORE VISION

*To inspire and support families in creating sustainable, thriving gardens that bring joy, nurture the earth, and cultivate lifelong memories.*

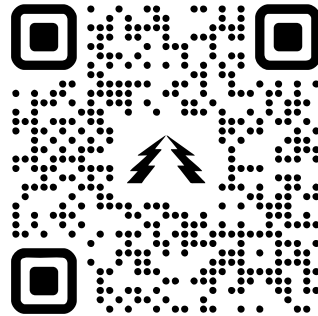
# THANK YOU FOR CHOOSING YARDCORE

We're proud to support your yardwork with reliable, battery-powered tools.

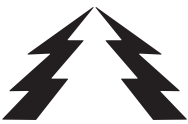
Your support fuels our mission to build tools that are better for people, and better for the planet.

REGISTER  
YOUR  
YARDCORE  
TOOL

SCAN



Scan The QR Code Or Visit: [register.yardcoretools.com](http://register.yardcoretools.com)



**YARDCORE®**  
**TOOLS BUILT FOR NATURE**